

PRODUCT DATA SHEET

Model: **RRT600**

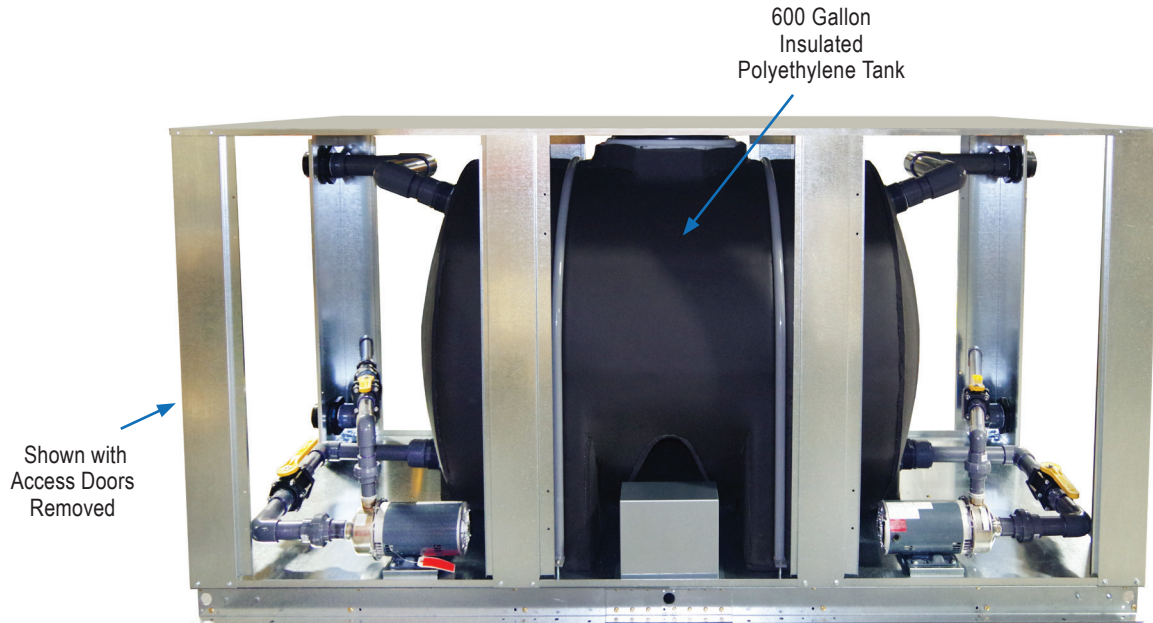
*600 Gallon Dual Process
Tank & Pump Package*



Legacy Chillers, Inc.

851 Tech Drive
Telford, PA 18969

Toll-Free: (877) 988-5464



(Piping shown before insulation was added)

(Polyethylene Tank) **Standard Features:**

- Open Vented **600 gallon Polyethylene tank**
- 1/2" tank and fluid piping insulation
- SCH80 PVC and Polypropylene piping
- Fused, **STAINLESS STEEL** evaporator recirculating pump
- Recirculation pump discharge ball valve and cleanable "Y" strainer
- Control box with pump terminal block
- Galvanized steel sheet metal cabinet
- Hinged removable access panels

Available Options:

- **STAINLESS STEEL SEALED TANK**
- Fused, **STAINLESS STEEL** process pump
- Dual process pump with manual changeover
- Dual process pump with auto changeover
- Pump suction isolation valve
- **Process Pump VFD Controller**
- **Tank fluid sight glass**
- Tank liquid level indicator with dry contacts
- Low flow by-pass valve
- **Water flow meter**
- Auto city water make up solenoid
- 1" tank and piping insulation in lieu of 1/2"
- Seal-tight electrical conduit and connections
- **Painted - Powder Coated**



PRODUCT DATA SHEET

Model: RRT600
*600 Gallon Dual Process
 Tank & Pump Package*

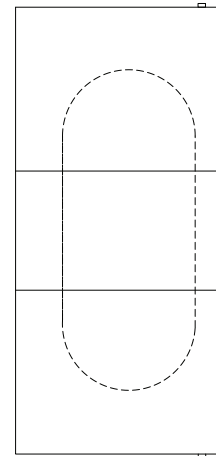
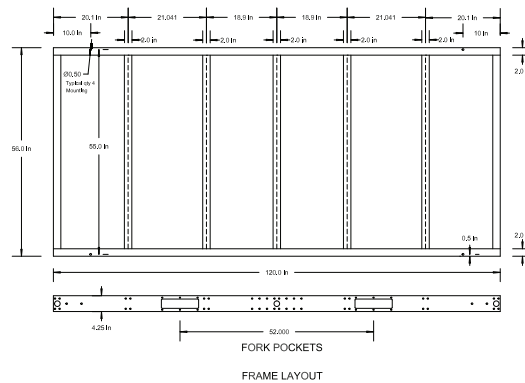


Legacy Chillers, Inc.
 851 Tech Drive
 Telford, PA 18969
Toll-Free: (877) 988-5464

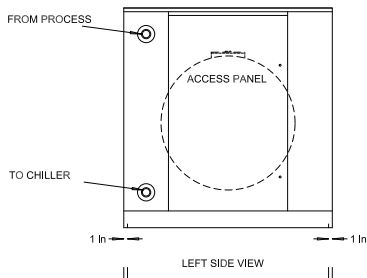
Polyethylene Tank & Pump

Tank Model	Length Inches	Width Inches	Height Inches	Water Conn.	Tank Capacity	Recirculation Pump	FLA 230/30	FLA 460/30	Weight Lbs.
RRT600	120	56	60	3" FPT	600 Gallons	5HP	13.7	6.5	625

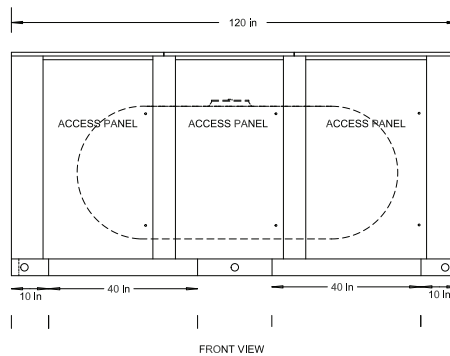
Product Dimensional Drawing



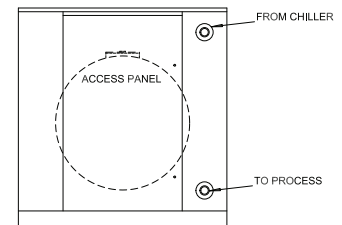
TOP VIEW



Qty (8) 1/2" Mounting Holes



FRONT VIEW



RIGHT SIDE VIEW