

# Idec Touchscreen Control Panel



(Inside Mounted)  
Touchscreen  
Control Panel for  
Outside Chillers



(Outside Mounted)  
Touchscreen  
Control Panel for  
Indoor Chillers

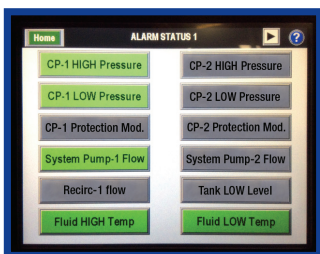


\*Some network configuration required.

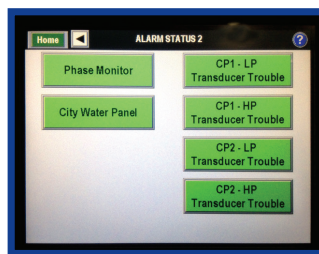
## Touch Screen Key Chiller Control Features:

- **USB update slot for IN-PLACE HMI and PLC software updates available from [jmchillers.com](http://jmchillers.com)**
- **Free Software Upgrades**
- **CE, UL Listed**
- **Monitor / Control your chiller from anywhere\***
- **16gb SD card in slot for data storage - Standard**
- **Ultra bright display screen with auto screen saver**
- **Real-time Pressure and Temperature readings**
- **Automatic COMPRESSOR Lag/Lead with FIVE operational modes**
- **Automatic SYSTEM PUMP Lag/Lead with FIVE operational modes**
- **Factory configured for ALL Legacy's chiller options**

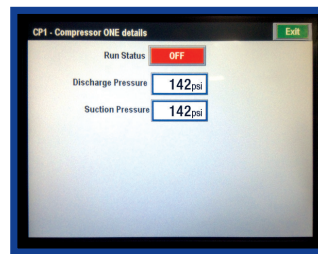
## Other Touchscreen User Interface Examples...



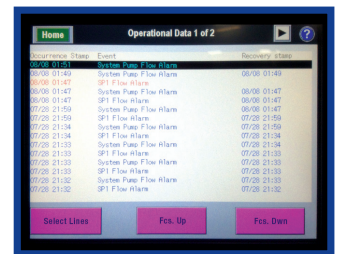
Alarm Status Screen 1



Alarm Status Screen 2



Compressor Operation Status and Pressures



Operational Data and Fault Log

**Have more questions?**

Call or Email: [support@legacychillers.com](mailto:support@legacychillers.com)